

Pett and Pett Level News

Pett & Pett Level News
January 2026

**Press PAUSE if you wish to read article,
then press PLAY to continue, thank you.**



January 2026

DIRECTORY OF ADVERTISERS			
BESPOKE FURNITURE		LOCAL PRODUCE SUPPLIERS	
Jennings-Bramly Furniture	20	The Old Butcher's Shop	12
EAT, DRINK, STAY		PEST CONTROL	
Bramley & Teal Holiday Cottages	18	Rother Pest Control	35
Coastguard Cafe	30	Wanedale Pest Control	28
New Beach Club	16	PETS & LIVESTOCK	
The Royal Oak Pub	36	Hayley's Hounds	32
Two Sawyers Pub	39		
GARDEN SERVICES		PLUMBING & ELECTRICAL	
PJ Turner	14	A A Farnes	32
Toby Sims Gardener	13	A and O Boilers & Plumbing Services	6
HAIR & BEAUTY		Hannington-Gilbert Electricians	8
Adem Alpay - Hairstylist & Colourist	34	Travis Electrical	20
HEALTH & WELLBEING		PROFESSIONAL SERVICES	
Dawn Turner - Holistic Therapy	18	Charles & Co (Estate Agents)	37
Eyemasters	8	Funnell & Perring (Solicitor)	35
Food Intolerance Testing	14	Hastings & Rother Legal Services Ltd	30
St Michael's Hospice	28	Lyn Cooke Associates (Wills/probate)	33
Tara Begbie Footcare	32	Rubicon Chartered Building Consultancy	31
Whitegates Care Home	26	Rush, Witt & Wilson (Estate Agents)	10
Yoga For All	16	Woodland for sale	
HOUSEHOLD SERVICES		PROPERTY MAINTENANCE	
Bargain Carpets & Floors	24	KR Windows	12
Conquest Cleaning	32	Alan Danskin - Your Local Handyman	6
Events-Travel	35		
Kitchen Appliance Demo	28	STONEMASONS	
S.T Locksmiths	31	Yew Tree Stone	28
Surelock Homes - Locksmith	24	VEHICLE SERVICE & REPAIRS	
Telly Addicts	35	Gem Auto	33
Advertising rates (year/month):			
Full page £220 / £20 ; Half Page £110 / £10 ; Quarter Page £55 / £5			
ALSO IN THIS EDITION:			
Bus Timetables			43
Contacts for Village Groups and Room Hire			43
Council Responsibilities & Contacts			41
Emergency Contacts for Utilities			42
Local Services			40

Front Cover: Karen Lowe

Editors: Donna Gilbert, 01424 812185; Louisa Tasker, 07900 800291; **Advertising:** Jane Sweaney, 07788 410342; **Deliveries:** Sarah Adams, 07786 333560. The magazine is distributed by our team of volunteers to all households in Pett & Pett Level. All editions of the magazine are available for download from pettnet.org.uk

EMAIL US AT magazine@pettnet.org.uk

DEADLINES:
COPY (LETTERS, ARTICLES, ETC) - MID-DAY THE 15TH OF EACH MONTH
 Adverts (new, changes, payments) - MID-DAY THE 1ST of each month

COPY: must be sent, by email, to magazine@pettnet.org.uk. If you want to provide something handwritten, please contact us first otherwise it may not be printed. Copy must be accompanied by your name, address, and phone number. Where pictures are used it is the responsibility of the author to ensure that permissions have been granted. When submitting letters the writer should give due consideration before naming individuals, either directly or by implication. No letter will be published anonymously. We reserve the right, at our sole discretion, to cut, crop, edit or not publish any copy received.

PUBLISHERS: Pett & Pett Level News is published by Pett Parish. Every reasonable effort has been made to ensure the accuracy of the information supplied herein. However, neither the publishers or the news team can be held responsible for any errors or omissions (E&OE). Unless otherwise indicated, opinions expressed herein are those of the authors of the individual letters, articles, announcements, and adverts, and they do not necessarily represent the views of the publishers or the news team. Neither the publishers or the news team can uphold or recommend any advertiser here within this publication.

Pett & Pett Level News is printed by Impression IT, St Leonards, 01424 852116

Gardening Club Notes - December 2025 by June Harris

The focus as the year draws to a close is the Christmas Party, on the 19th, which most of our members are looking forward to... Next year, however, is not far away. Our first meeting of the year will be on Tuesday January 13th at 7.30 p.m. in the Catherine Holman Room at Pett Village Hall. The meeting will include Subscription Renewal. If anyone is thinking of joining the club, or just trying it out, please do come along and see what we do. The annual subscription is £10, or £3 for one session. We will also be welcoming our first speaker of the year, Dr. Richard Claxton, with a talk entitled "Gardening for Health".

The Committee would like to thank all our members for their continuing support, kindness and generosity throughout the year, without which... We wish you all a Healthy and Happy New Year!

Happy New Year to You All!

Donna and Louisa

Dear Editors

Firstly, thanks to all who came to the quiz; we raised an amazing £533 so thank you all for coming and your generosity.

Secondly a huge thank you to everyone for kindly donating to Surviving Christmas whilst we sang carols, commencing on a warm and surprisingly dry evening. Thanks to all those who came and sang it was great fun. Over the two evenings we raised £325.60.

Hope you all had a lovely Christmas.

Best wishes Becky

Dear Editors

Just to say, what a wonderful piece of artwork from 8-year-old Eleanor for the December cover. How about some more children's contributions, maybe for Easter?

Happy New Year and thank you for your ongoing work for the Pett and Pett Level News.

From Tony Howard.

Dear Residents

Many thanks for your continued custom and support for the Old Butcher's Shop over the past year, we very much appreciate it.

For those we have yet to meet, you may not realise just how many different products we stock to cover things that you suddenly run out of. One of the most frequent comments we receive is, "I have been driving past for years, and you actually have everything I need". If you are unable to get to us, we do offer a free home delivery service within Pett, available six days a week.

However, whilst the business has grown, we have noticed over the last 12 months a drop in footfall on a Saturday afternoon. People comment, "I didn't realise you would still be open, I thought butchers shut at lunchtime" (as quite a number do). After much deliberation and breaking down figures, we have decided that from January we will close at 1pm on Saturdays. This will allow us all to achieve a better work life balance (one of us has school age children to find childcare for) and to maybe attend some more village events, which by the time we have closed, have generally finished. We will of course continue to monitor your feedback. The staff have all been offered additional hours on other days.

Thank you again for your support and we would like to take this opportunity to wish you a Happy New Year.

Sarah Whiteman
The Old Butchers Shop

Rod and Heather are so grateful for all the offers of help, good wishes and general neighbourliness shown by their friends during the period of Heather's major open-heart surgery recently.

Reports that surgeons were unable, even after a third attempt, to find a heart are much exaggerated!

Rod and Heather

The New Beach Club

2026 Gigs and events

Sunday 18th January 2026
Paradise Duo 3pm

Friday January 23rd 2026
Burns Night with Martin Ray 6.30pm

Sunday January 25th 2026
Charlotte Hoy 3pm

News from St Michael's Hospice

Play with purpose

If you're looking for a fun way to remember someone special in 2026, why not consider playing the Hospice's weekly Lottery? For just £1 a week, you could take out a Lottery number in memory of someone you miss and support your local Hospice at the same time.

Sign up today at stmichaelsospice.com/lottery or call 01424 456384 and you could be the next £2,000 top prize winner.

Can you display a collection pot?

Are you a local business or part of a club, committee or group? If you're looking for an easy way to support St Michael's Hospice - why not grab one of their collection pots? It's simple to sign up, just email fundraising@stmichaelsospice.com to request a pot, they'll drop it off, you collect spare change, and when it's full, the Hospice will swing by to pick it up again - easy. No hassle - just an effortless way to make a big difference for your local Hospice.

St Michael's Hospice Thursday Coffee Stop and Saturday Social

St Michael's Hospice understands how hard it can feel to reach out, especially if you're feeling lonely. That's why they warmly invite you to their Thursday Coffee Stop which happens every Thursday from 10am - 12pm, in the Hospice Café. Or their Saturday Social, which takes place on the last Saturday of every month from 10am - 12pm in the Arthur Easton Centre (TN38 0LB).

These informal events are a welcoming space to meet others and have chats, all whilst sipping tea and eating cake. Everyone is welcome. To find out more, visit stmichaelsospice.com/event-diary or call them on 01424 445177.

A and O

Boilers & Plumbing Services

For all plumbing services from air source heat pumps to tap repairs, boilers and heating system repairs

Gas safe registered

Andy Goodsell
4 Rectory Park, Pett Rd, Pett

07809 573389

Alan Danskin Maintenance & Restoration

Your local Handyman

Tiling & Flooring
Decorating
Flat Packs & Shelving
No Job Too Small

A professional, reliable & friendly service

25 years experience
Fully insured

Free Estimates
Call Alan on 07748 692168

Pett Level Preservation Trust News January 2026

Southern Water

The water issue that I reported previously was finally attended to by Southern Water. They discovered that their mains water pipe (apparently installed in the 1970s) that crossed the nature reserve in the area of the Drinkers Path had developed a leak. However, they started work on repairs before informing the Trust or indeed seeking permission. Soon two massive holes were dug between the RMC and the New Beach Club before meetings could be arranged to address the issue with Southern Water staff and Trustees. Damage was also caused by tracked vehicles travelling over sensitive habitat (including the area where orchids were first sighted in 2024) and parts of the Beach Club car park also suffered. Abject apologies were forthcoming after the Southern Water CEO became involved. In addition, damage to the Trust land and to the car park was made good as far as possible and some financial compensation offered. Hopefully lessons learned by Southern Water!

Shortly after, the bio-beads release and subsequent pollution of Camber Sands beach came to light, piling even more pressure on Southern Water. There was no direct impact on the Trust's land, but the two episodes shone a bright light on our dependence on a healthy and well-maintained water infrastructure. Local organisation Strandliners played a massive voluntary role in highlighting the bio-bead release and in the subsequent clean-up operation. Well done Andy Dinsdale and the Strandliners team (strandliners.org.uk).

Rescue of the plastic chair

Four volunteers, assisted by a grappling hook, managed, with some effort, to remove a plastic chair that had been tossed by some uncaring folk into the bramble below the Observation Post. It wasn't the easiest of tasks, requiring several attempts to secure the grappling hook around the chair. A prolonged battle with vicious bramble bushes that were reluctant to give up the chair then ensued, whilst the volunteers tried to avoid plummeting headfirst down into the thicket. Success was eventually achieved but not before the chair lost a leg; thankfully volunteers managed to keep their own! A second chair, also tossed off the cliff but landing in a more accessible position, will be removed at the work party on 14 December. Volunteers are working one Sunday in every month now. The November work party focussed on the area surrounding the pond near Glen View Cottage. The removal of bramble and sycamore and alder saplings is taking up most of the volunteers' work. It does seem to be a never-ending task but we will be employing contractors to assist at some stage in the early Spring. If you fancy joining in with the volunteers, please contact Martin King (details below).

Wildlife

Trustee Cliff Dean recorded both mistle and song thrush singing in the area around Toot Rock along with lots of blackbirds, blue tits and 16 chiffchaffs! Robins too have been tuning up, as have the much rarer Cetti's warblers, and ravens persistently croaking on their regular journeys across the nature reserve. Most plants are yet to show any flowers, but some very late vipers bugloss was noted on the old tennis court.

2026 Garden Party

We are on for our Garden Party 2026! This year's, held on 21 June 2025 at Marsham Farm, was a huge success and much enjoyed by all. So much so that Trustee Caroline Turk has generously agreed to host and organise it again this summer. It's going to be bigger and better than ever and bound to be a sellout. Details are being worked out so stay tuned.

Happy New Year

Finally, a very Happy New Year to all our friends, supporters and Trustees. Please do continue your support of the PLPT throughout 2026 and invite friends or colleagues to join us. For the latest news follow us on Instagram and Facebook or visit our web site www.pettlevelpreservationtrust.org.uk



Serving your community for 60 years
Advice and estimates free of charge

All Electrical Work Undertaken:

LED Lighting / Electrical Inspections / Fire Alarms
EV Chargers / CCTV / Solar PV & Battery Storage



01424 428696

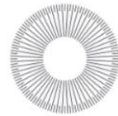
info@hanningtongilbert.co.uk
www.hanningtongilbert.co.uk

The Highest Quality Eyewear

Competitively Priced

Frames: Traditional & Designer
Lenses: Single Vision, Bifocal & Varifocal,
Clear, Transitions and Polarised
Computer Glasses

Phone for an appointment - Please bring your prescription



EYEMASTERS

01424 316 117

Inishwood, Pett Road,
Pett, East Sussex,
TN35 4HB

Email:
richard@eyemasters.co.uk

www.eyemasters.co.uk

Church News

Firstly, the church PCC would like to thank all who supported our two village carol singing sessions and the Carols by Candlelight service at the church. We raised £564.10 for Hastings-based charity Surviving Christmas, which does such excellent work.

Benefice reorganisation.

I'm pleased to say that the Church Commissioners have now approved the formation of a new Benefice consisting of **Winchelsea, Icklesham & Pett**, to come into operation on the 1st of January 2026. This means that the former benefice of Fairlight and Pett will cease to exist. Fairlight will instead, form a new benefice with Westfield and Guestling to be known as the Benefice of Westfield, Guestling and Fairlight.

What does this mean in practical terms? Well, for the past 4 years, the Revd Jonathan Meyer, who was rector at Winchelsea until his retirement in February 2025, looked after our two churches in Pett. This arrangement worked well, and good relationships were built up with the communities of Icklesham and Winchelsea. It therefore seemed logical to formalise this relationship, and an application was made to the Bishop of Chichester and the Church Commissioners to create a new benefice. This is a complicated legal process, which is why it has taken over 18 months to complete. Happily, all will be in place as we welcome our new Rector, Nathanael Hayler in January.

New Rector - Revd Nathanael Hayler

The Bishop of Chichester will formally install and licence our new Rector, Nathanael Hayler on Wednesday 28th January 2026, 7.30pm in St Thomas' church, Winchelsea. If you wish to attend this service, please let me know - my contact details are below.

Building works

It was lovely to welcome folk back to church in December after a break of 6 months whilst repairs and renovations were being undertaken. As our Treasurer has reported in previous issues, pigeons in the spire were causing considerable damage, but I'm happy to report that a pest removal company has humanely removed the pigeons and fitted grills to the windows to prevent further access. They also carried out another deep clean, so I hope that this has solved the problem once and for all. You may have noticed that the church clock stopped for over a week in December, this was due to the parts of the clock becoming stuck with pigeon poo! Our thanks go to 'Dave the Clock', who looks after the clock for us, and who managed to ensure the clock was in working order for Christmas.

Our fundraising continues apace - the recent removal of pigeons, grill installation and cleaning set us back £2K and we have just paid the final invoice for builders George Stone Ltd and our architects, amounting to £17K, although there will be an additional £3K to pay for a replacement rain water downpipe and hopper on the spire, scaffold hire and the repointing of the chimney to the rear of the church, and this will hopefully be carried out in the new year. We will also be claiming 6K in grants.

We are extremely grateful to all of you who have contributed so far to our fundraising. If you would like to donate, please contact our Treasurer, Mrs Heather Godwin on 07977100296. Thank you for any help you can give.

John Case, Churchwarden, Churches in Pett & Pett Level
Email: churchwardenforpett@gmail.com
Mobile: 07536998530



**RUSH
WITT &
WILSON**

Sell Your Home with Confidence

With 30 years of experience, 7 offices, and expert local knowledge, we connect sellers with serious buyers to achieve the best price for your property quickly and professionally.

Your Trusted Partner in Selling Your Property

Since 1993, we've been helping people successfully sell their homes across 1066 Country and the Weald of Kent. Our deep local roots and decades of experience ensure your property is marketed to the right buyers with expert support every step of the way.

Hastings	01424 442 443	Northiam	01797 253 555
Bexhill-on-Sea	01424 225 588	Teneterden	01580 762 927
Rye	01797 224 000	Lettings	01424 446 916
Battle	01424 774 440	Property Mgmt	01424 430 011




 @rushwittwilson
www.rushwittwilson.co.uk




PLIRB 2026 New Boat Appeal



Firstly, we would like to wish everyone all the very best for 2026. This year is set to be hard work for the PLIRB team as our current main boat will be due for replacement for the 2027 season, so 2026 calls for a lot of fundraising!

As we are sure most of you know, we are one of around 85 INDEPENDENT lifeboats up and down the country. This means we are not funded by the RNLI or the government, so every single penny we spend on running costs and equipment we must raise ourselves.


This year, in addition to covering those operating costs, we will be focusing on raising the one hundred and fifty thousand pounds (£150k) that will be needed for the new lifeboat.

The Maritime Coastguard Agency guide lays down a raft of specifications that the chosen boat needs to meet. Throughout the year we will be working with a number of prospective manufacturers to understand their product and ensure that it matches not only the MCA requirements but our PLIRB operational requirements as well.


One hundred and fifty thousand pounds is a lot to raise; currently we have achieved about 25% of this, so we still have a long way to go.

The boat itself will be a completely different method of construction as the world moves away from glass reinforced plastic (GRP) and all its environmental issues. The new vessel will still be a RIB but will feature an aluminium hull and D-shaped sponsons (the big round orange bits on the side). This will provide us with a lot more operating room and storage which we currently do struggle with. The engine technology will change to a much more efficient 4-stroke unit,

continued on page 13



ORDER ONLINE
for home delivery
to TN31, TN34, TN35,
TN36, TN37 & TN38
or Click & Collect



**A family-run sustainable Butcher
in Pett serving locally-reared beef,
lamb and free-range pork.**

01424 812148
shop@oldbutcherspett.co.uk
Pett Road, Guestling, TN35 4EX

Follow us for updates, offers & promotions
@oldbutcherspett

Plus
oldbutcherspett.co.uk

- Local produce from dairy and bakery to seasonal fruit and vegetables
- General groceries
- Newspapers and stamps



KR WINDOWS LTD

Installers of Rehau u.p.v.c and Smart Aluminum

Conservatories	Aluminum bi folds
Porches	Handles
Windows	Hinges
Doors	Sealed Units

Solidor and rock door composite doors
All work Guaranteed. Over 20 years Experience.
Fensa Registered Company

Call Kev for a free estimate and advice on:
07970 207914
kevinross969@hotmail.com



again cleaner and more economical. All the electronics will need to be updated with the latest technology for operation over the next 10 years, this will also include the latest version of our crew communication system and helmets, essential for communication between the crew, the boat, coastguard, our base and the beach.

The increase in space will enable us to increase our range, endurance and capability in numerous areas, including first aid, the size of vessels which we can tow, and the number of people we can accommodate. We will continue to ensure we remain a worthy asset to be called upon by the UK coastguard to those in need in this area 24/7, 365 days a year.

So how can you help? Well, it all comes down to money, whether through sponsorship events that you can organise, small donations, or larger gifts and grants, every spare penny raised throughout 2026 will go towards the new boat. You can donate via our website, or simply scan the QR code below, to set up a one-time donation, or spread your support with monthly donations. For those of us who aren't tech-savvy, you can also send a cheque if you prefer. Please make it out to Pett Level Independent Rescue Boat Association and send it to:

PLIRB Financial Officer, 40 Brede Valley View, Icklesham, East Sussex, TN36 4DA

Thank you, as always for your continued help and support.



**Toby Sims
Gardener**

"Flowers always make people better, happier, and more helpful; they are sunshine, food and medicine for the soul."
Luther Burbank

07905 019168 • sims.toby@gmail.com

P.J. Turner

ALL ASPECTS OF
TREE WORK
CONTRACTOR
MOWING – LOGGING
FENCING

FREE
ESTIMATES

07816 285618

Sarah Bragoli

Food Intolerance Testing



Are you suffering with IBS, Headaches,
Bloating, Stomach Pains and Fatigue?

These are just a few of the symptoms caused
by food intolerances.

I can carry out a pain free, non-invasive test to
help pinpoint potentially harmful foods.

Please have a look at my reviews on Trustpilot
'Sarah Bragoli Food Intolerance Testing'

Don't delay, book today!

enquires@sarahbragoli-fit.co.uk

07810 044750

www.sarahbragoli-fit.co.uk

Based in Friars Hill, Guestling

Please note there are no tide tables in
this issue as the Environment Agency
had not updated these by the time we
went to press. Below is the link to the
government website.

<https://www.gov.uk/government/publications/rye-harbour-tide-times>



Coffee Morning and Community Library

Please come and join us at Pett Village Hall on the first Wednesday of every month.
There is always a delicious selection of homemade cakes!

Our Library is free to join, we have over 200 books which are refreshed regularly

Robert from East Sussex Hearing will be there for your NHS hearing aid needs and batteries.

The Jigsaw library has a large selection of puzzles to suit all tastes.

There is always a member of the Parish Council on hand should you wish to speak with
them. 500 Club Winners will be drawn during the morning.

All proceeds are donated to charity so please come and join us; we would love to see you!



Board Game Evening

1st Thursday of every month at

Pett Village Hall 7pm to 9pm

£2 per person

Come and enjoy a fun evening playing games with others and hopefully learning to
play a few new ones! We have a selection of games on offer, or you can bring your
own to share.

Come with family/friends or on your own. Everyone is welcome.

Enjoy a digital detox, stimulate your brain, share a laugh with others and reduce
your stress levels.

Tea and coffee provided, or you can bring your own refreshments

Yoga for All with Robin

in Fairlight End Garden, Pett Village Hall, and Fairlight End Studio, Pett

Enhance your fitness **AND** your sense of calm and well-being in beautiful surroundings

Classes will be held in Fairlight End Garden when weather allows, and in Pett Village Hall and Fairlight End Studio when it doesn't!

Classes are Mondays 6-7.30 pm and Thursdays 9.30-11 am.

For more details or to book a place simply contact robin@robinhutyoga.co.uk or text 07446980721 More details on <https://www.robinhutyoga.co.uk>

Private and home training also undertaken

*International Yoga Alliance Diploma and Premier Training International Diploma.10 years' teaching experience.



Regularly Changing Guest Ales
Weekly and Monthly Social Events
Regular Live Music
Free Venue Hire to Members
Free Wi-Fi

Bar & Kitchen on the Beach
Home of the New Beach Sea Angling Club

Pett Level, Hastings, TN35 4EH
info@thenewbeachclub.co.uk
01424 812080

www.thenewbeachclub.co.uk
[Facebook.com/newbeachclub](https://www.facebook.com/newbeachclub)

Annual Membership

New Members:
Individual: £32, Joint: £52
Existing Members:
Individual: £30, Joint: £50

Pett Parish Council Update

The council met in December, primarily to agree the budget for the financial year 2026-27. As I wrote last month, it has been necessary to increase the precept to cover the cost of running the toilets at Pett Level. This covers the coming financial year and will also maintain the level of reserves at the correct level after more has been spent on emptying the septic tank at the toilets than was predicted on the budget for the current financial year. When you receive the information about your council tax, you will see what seems to be a very large percentage increase in the parish council precept. However, the amount you will have to pay if you have a band D house will work out at about £2 a week, still a small proportion of your total council tax.

The budget will be available on Pettnet, so you will be able to see on what the council spends your money. I am sure you will agree with me that it is important for the council to remain solvent and not get into the position of some other councils, which are now bankrupt.

The Pett Level toilets were again discussed at the meeting. A quote has now been received for rectifying the internal leaks and arrangements are in progress to clear the ditch at the back of the toilets. Other possible measures to reduce the amount of waste that has to be collected, and therefore the related cost, are being investigated. It is also worth reporting that the sum put in the donations boxes is usually between £50 and £100 a month. While this is not enough to pay for the maintenance, it is a welcome contribution to the cost.

One of the council's main responsibilities is the maintenance of the recreation ground, as well as some of the verges in the village. I hope all will find that this is done well. For example, the hedges at the recreation ground have recently been cut and the quality of the grass there is high as a result of regular mowing. I am also glad to see that dog owners are, in general, very responsible and there is very little pollution. This is partly because there is a dog waste bin, which is regularly emptied; the cost is covered by the precept.

Local government reorganisation was again discussed at the council meeting. The government has put out a consultation document about the structure of local government in Sussex. It is possible for individuals, as well as organisations, to respond. The web link is <https://www.gov.uk/government/consultations/local-government-reorganisation-in-east-sussex-and-brighton-and-hove-and-west-sussex> and the closing date is 11 January. If you look there, you will see that four different structures have been proposed by the various councils in Sussex. The option favoured by the parish council is that put forward by East Sussex County Council and Rother District Council, as well as other councils in East Sussex. This is for there to be two unitary authorities in East Sussex, one essentially covering the present county council area and the other Brighton and Hove.

What is still not clear is whether there will be a layer of government between the unitary authority and parish and town councils. There are proposals being discussed for neighbourhood area councils (NACs), which will include representatives of the police, fire services, the NHS and possibly others as well as representatives from town and parish councils. However, these will have no power. Rother Association of Local Councils (RALC) has a working party looking at this and its main focus is on how these will be financed and, perhaps more importantly, how communication between the different layers of government will be handled. It is, incidentally, also not yet clear whether there will be a successor to RALC and, if there is, what form it will take.

Last month, I thanked all those who serve the community of Pett and Pett Level. As we enter a new year, I wish everyone success in their activities. It is notable that, unlike some other parishes where the village hall is underused, it is sometimes difficult to book our village hall because it is so well used. So, particular thanks to the village hall committee for all their work. Incidentally, you may like to know that the last installment of the loan for building the hall has recently been paid.

David Penfold, Chair, Pett Parish Council



Dawn Turner
DIPLOMA, MFTT

Swedish Massage
Hot Stones Therapy
Reflexology
Indian Head Massage
Traditional Usui Reiki

Home Visits and Gift Vouchers Available

1 Watermill Lane
Pett, East Sussex
TN35 4HZ
01424 812740 / 07901 591696
dawnannturner@icloud.com
massagehastings.com

Registered member of the Federation of Holistic Therapists



BRAMLEY & TEAL
HOLIDAY COTTAGES

Join our fantastic collection
of properties in Kent & Sussex

Do you currently own a property in Kent or Sussex, with a view to venturing into the holiday letting business?
We've got a dedicated team ready to help you, and help make a success of your property!

www.bramleyandteal.co.uk

Part of the TRAVEL CHAPTER



The Happy Home Celebrating the Chinese New Year

Happy New Year to you! For people throughout Southeast Asia, and for Chinese communities and families everywhere in the world, celebrating the Chinese New Year is a very special event. It can be quite confusing that the Chinese year starts on the 4th February, being based on the Solar calendar that is familiar to us, yet it is only rarely celebrated on that day. This is because the celebration of the Chinese New Year, sometimes termed the Spring Festival, is based on the Lunar calendar. It always begins on the second new moon following the Winter solstice, which this year is the 17th February. In other years it would begin some time between the 20th January and 20th February. Chinese New Year festivities continue for fifteen days, ending at full moon with the Lantern Festival. The first seven days are considered a public holiday, but many people take a holiday break for the full fortnight.

Happy Chinese New Year Customs

For several days before New Year's Eve, traditional customs take place in Chinese households with fervent activity in preparation for the festivities.

People would go out and buy new clothes to wear for the New Year celebrations, to represent a fresh start and bring the wearer good fortune in the year ahead. Vibrant colours like red, gold, purple and orange are favoured choices to bring luck, wealth and health. Black and white clothes are unpopular, being associated with mourning.

Homes would be thoroughly cleaned, and floors swept throughout to banish any bad luck and make way for incoming good fortune. Red decorations would appear everywhere, in rooms, across windows and on doors. The colour red is considered to be a most lucky colour in Chinese culture and sometimes thought to ward off evil spirits. It represents success, happiness, prosperity and vitality, and it dominates everywhere during New Year celebrations.

Chinese New Year's Eve is an occasion for families to gather for their annual reunion dinner. This huge feast is a noisy, exuberant occasion with much laughter and fun, continuing until firecrackers and fireworks are set off at midnight to scare away evil and welcome in New Year's Day. Grown-ups and elders of the family give red envelopes, filled with 'lucky' money to the children and unmarried young relatives as a symbol of good fortune. These family festivities continue for at least the next two days during the holiday.

New Year's Day is typically a time for visiting senior relatives of the family and close friends, always bringing auspicious presents and exchanging good wishes. Visitors never come empty-handed. They would usually bring festive gifts that represent abundance and positivity for the recipients, especially oranges, mandarins, tangerines, kumquats or satsumas, which resemble 'lucky gold wealth', also food hampers and sweet delicacies that symbolise enjoying a sweet life.

Continued on page 21



NEED AN ELECTRICIAN

TRAVIS ELECTRICAL

- Extra Sockets
- Complete Rewires
- New Consumer Units
- Fuseboards
- Fault Finding



Free Quotations ♦ Fully Insured

Call Luke: 07821 325797



Jennings-Bramly Furniture Ltd



Beautiful
furniture
dovetailed to
your needs

- Drawing rooms
- Dining rooms
- Bedrooms
- Kitchens
- Libraries
- Studies



01424 814620 | 0771 555 4694 | www.jennings-bramly.co.uk | richard@bramly.co.uk

The lively Lantern Festival signals the final celebration of the Chinese New Year. Streets are brightly decorated to symbolise good luck, and animated dragon and lion dance parades are performed to bestow blessings and prosperity on the crowd around them. During the evening many floating and flying lanterns are released, and noisy fireworks are set off to drive out the past year and welcome in the new year.

Implementing Chinese Customs to Welcome our New Year 2026

New Year means new beginnings and letting go of things that don't work for you any more or have become surplus. Get rid of the old and make space to bring in new energy. Start by clearing out old clutter (*more about it in my next article*). Discard old food, unloved clothing, and everything else that is no longer cherished or needed.

Spring clean everywhere, including inside cupboards, drawers and ledges. Play music and dance to uplift and enliven the atmosphere in your home with joy and fun. Open your windows wide to welcome in a new breath of fresh air.

Do something different. It invites in positive new energy. For example, take a different route to work, get a new hairstyle, explore new places, and fresh opportunities. Whatever you do, do it with positive intention. Even making a small change will have a big impact.

Wear something red because the colour red is auspicious and is considered to fend off ill fortune. Its element is Fire, characteristically it is illuminating, passionate, and successful.

Get a new door mat - this symbolism to make a positive fresh start to the year can become reality. And for the same reason it helps to smarten up your entrance area too.

Place a large bowl of citrus fruit or a vase of red flowers on the dining table to represent renewal, growth, and abundance in every aspect of your life.

A thoughtful Chinese tradition at New Year is to reconcile differences, forget past grudges, reunite and sincerely wish peace and happiness for others. Restoring harmony is a fundamental of Feng Shui and it feels good to patch up misunderstandings. At least give it a go; you may be agreeably rewarded by the outcome.

May I take this opportunity to wish you peace, abundance, health and joy during 2026, the Chinese year of the Fire Horse.

Warm wishes

Sylvia
Sylvia Bennett
Accredited Feng Shui Master
Architectural Design Consultant
Holistic Therapist

www.fengshui-living.com
+ 44 (0)7779 139187



Angela Hawksley

Angela has been, a prominent local figure for many years now and, after interviewing her some time ago, it is clear that she has a fascinating backstory.

Angela was born in the Middle Temple in the legal heart of London, and that is where she spent her childhood. Her father, Victor Durand, was a Criminal Law barrister who became increasingly well-known. Angela and her brother played in the Inner Temple and Middle Temple gardens and the bomb sites which surrounded their flat. The bomb sites provided very exciting playgrounds, and Angela has happy memories of those days. The bomb damage in London was huge; Angela's brother was great friends with the son of one of the clergy at St Paul's, and their route between Temple and St Paul's was *entirely* on bomb sites.

Angela and her brother attended a Montessori school run by the wife of the Rector of St. Bartholomew's Church who had been taught by Maria Montessori. The school was originally in the church gatehouse which was the Rector's house and so was called the Gatehouse. When numbers increased, the teaching took place in the church cloisters. Angela went from there to the City of London School for Girls and then, at the age of 10, went to boarding school until the age of 18 (Roedean School, Brighton). She read Classics at Trinity College, Dublin and after that spent two years at Harvard University in the Department of Linguistics where she received her Master's degree. She then read for the Bar and enjoyed about five years as a barrister before moving to New York. Soon after her return to England she settled permanently with her husband and three children in Pett Level. By the mid-eighties she was widowed.

Her earliest contact with this area was the 1950's, but before this their family holidays consisted of sailing. Her father had bought a seagoing Dutch barge called De Bries, and they regularly set out across the channel (avoiding buoys marking the location of the as-yet unswept and possibly mined areas of the channel). Neither Angela nor her mother were keen sailors, unlike her father. Indeed, her favourite part of those holidays was entering the calm waters of foreign ports!

Finally, her parents sold the barge. It was bought by the actress Dianna Dors, who loved her boozey showbiz parties, but didn't show so much enthusiasm in the wooden clinker-built barge which began to fall into disrepair. Eventually one day during one of her parties, the barge came to grief near Runnymede.

After selling the barge, Angela's parents bought Cliff House as a holiday home at Cliff End in 1955. They moved in a few months later in 1956 and discovered that the garden was being cared for voluntarily by Bert Luck. He had apparently carried on gardening after the previous owners moved out 2 years before! Bert was one of a local family in the area, and as a keen gardener he couldn't bear to see the garden decline. Bert once said to Angela and her brother that he was surprised that their dad liked to take the family abroad every summer. He said that he had been abroad once and "it was a dreadful place". It turned out that his trip abroad was when he was a soldier in the First World War and was sent to the trenches!

Pett Level at that time was not as it is now. As many of you know, apart from the few established buildings, the road to Winchelsea Beach was single track, and there were a lot of converted railway carriages, buses and other temporary accommodation. Many of these were later replaced by permanent buildings. There were still a great many tank traps and barbed wire on the beach. In those days a lot of wood was washed ashore which Angela and her brother used to drag up the beach and it was then used as firewood. They were once filmed collecting wood by a Russian from the Communist holiday home near Flimwell. He said he was going to show his countrymen how English peasants lived!

Her mother didn't know anyone at that time but, at St Nicholas' Church, she soon met a lady who would become a good friend of hers, who went by the interesting name of Yvonne Banning Lover!

Soon Angela's parents met a lot more people and were part of the very active social and party scene during the late fifties and into the sixties in this area. One couple they became good friends with were Ralph and Connie Ward who lived at Stonelynk. Ralph's story is extremely interesting in its own right. He was shot down early in the war, taken in by a Danish family and eventually handed over to the Germans. He spent the rest of the war in a German stalag. Ralph had tailoring skills and could turn uniforms in the camp into farmers clothing. A habit that followed him into his life in this area, where he had a home-made patchwork suit that he insisted on wearing at smart events!

Many riotous parties were held at Stonelynk and Angela remembers these as being fantastic fun for her and the other local teenagers who accompanied their parents. Angela mentioned a couple of amusing stories concerning Ralph. Firstly, that his finances were a bit chaotic, and he often felt that he needed to sell Stonelynk, although always "something came up" to avoid having to sell! As such he had several viewings of his home. On one occasion people arrived to view just after he had a flood in the cellar. Ever resourceful, he put a running hose in the cellar and explained that the house was a bit dry and he was trying to make it more humid. We're not sure if the potential buyers were convinced!

The second story concerns a London Bus that Ralph bought once from an auction in Tenterden. He drove it over to Calais and put it in a big car park where you could see the ships come in. He had a sort of hunting horn that he blew every time a ferry came in from England. He convinced himself that he had converted it to a luxury holiday home but, in reality, he never had the time to do anything to it. He persuaded Angela's parents to go and use it, which they did despite resistance from Angela's mother. They found it was basically a bus with a bed in it! The burghers of Calais took a long time to get rid of it, as their efforts were always thwarted by his drinking companion who was, at that time, the British Consul in Calais. In fact, a few years later it was still there as, during the frenetic activity to raise money for the local community to buy Pett Level Trust land, a weekend in his bus was the 1st prize in a raffle. Probably in reality more of a booby prize!

All of this is just some of Angela's memories from our interview, and certainly there are many more that I can and will relate at a later date, and certainly will include the part she played along with many other local people, in the formation of the Pett Level Preservation Trust in the early 70's. This was a source of great satisfaction to her.

For now though this is enough to be going on with!!

Paul Petley

Bargain Carpets & Floors

Carpet and Vinyl Flooring supplied and fitted.
Same choice as any shop but at up to half the price.



**We can move your
furniture for you
and take away your old carpet.**

**For free home sample viewing and estimates
please call Stuart on 01424 855882 / 07734 659834
or email bargainfloors@hotmail.co.uk**

www.bargainfloors.co.uk

Checkatrade.com
Where reputation matters



Checkatrade.com
where reputation matters

LOCKSMITHS

www.surelockhomeshastings.co.uk
01424 538013 | 07535 511112

Email: surelockhomeshastings@yahoo.co.uk



Surelock Homes - your local locksmiths in Hastings.
We supply a range of locksmith services.

**NO call-out charge • OAP discounts • BS3621 locks
and reduced rates for customers with disabilities.**

Experienced, fully insured East Sussex locksmith services from Surelock Homes. We are a LOCAL Hastings company delivering a personal and friendly service to both businesses and home owners. DBS/CRB checked and N.C.F.E. Accredited.

Friends of PETT LEVEL PRESERVATION TRUST Founded 1973

Reg. Charity no. 1164637

Trustee & Membership Secretary:

Theresa Nouch,
Aldershaw,
Friar's Hill,
Guestling
TN35 4ET

theresanouch@aol.com



The Pett Level Preservation Trust (PLPT), a voluntary charity, was set up in 1973 to purchase 18 acres of varied habitat at the western end of Pett Level in order to protect this lovely area from development. Vigorous fund-raising efforts by local residents, coupled with a generous grant from the district council, contrived to fund the purchase price.

The Trust land, now comprising 25 acres, is actively managed as a nature reserve, parts of it have been designated as a Site of Special Scientific Interest (SSSI). It is rich in wildlife, with many different, and some rare, bird, plant and insect species. Members of the public are welcome to walk on the land with due respect to the Countryside Code.

The Trustees need to raise money each year in order to preserve and maintain this land for the permanent enjoyment of residents and visitors alike. More details can be found on our website www.pettlevelpreservationtrust.org or follow us on Facebook.

You can associate yourself with this important charity by becoming a FRIEND OF PETT LEVEL PRESERVATION TRUST in return for an annual donation of a minimum of £30. All FRIENDS receive an annual newsletter. If you would like to join, please complete the section below in BLOCK CAPITALS and post it to Theresa Nouch at the above address. Your support will be greatly appreciated and will help to ensure the continuance of this worthy cause.

Name:
Address:

Tel:
Email:
I wish to become a Friend of PLPT

Please find enclosed my annual donation of £30 (minimum £30 - cheques payable to PLPT please)

Or you can make a bank transfer/set up a Standing Order to:
Pett Level Preservation Trust Nat West Account number 59677031 Sort Code 60-02-07

Our privacy statement can be found on our website www.pettlevelpreservationtrust.org



No.1
not-for-profit
care home
in Hastings

It's time to
feel good
about care

With award-winning not-for-profit care homes,
longer trial stays and Home for Life funding assurance.

**Finally, care that feels good to Mum.
And to you.**

 **Whitegates**
Westfield
01424 232 396

greensleeves
care

Nature Notes by Alan Kenworthy

By the time you read this, the festivities will be nearly over, with just the New Year celebrations to be had and a pile of extra (and hopefully glitter-free) recycling to deal with. The shortest day has come and gone and longer days are on their way. But a week or two before the shortest day when I was using a bright day to tidy up the garden, I had a close encounter with a Sparrowhawk. As I walked through the 5-foot gap between the greenhouse corner and some shrubbery, the Sparrowhawk decided that what was left of the gap between me and the shrubbery was adequate and flew past my left shoulder. That was only a fleeting view of the bird, but the next day, what we assume to be the same bird perched on our bird feeding station long enough for me to get the camera, put the long lens on, and take the photo on the right.



The rufous brown of this bird and the coarse barring on its chest mark it out as a juvenile, probably in its first year. At this stage, it is impossible to tell whether it is male or female. When it reaches adulthood, its back and wings will change colour. If male, it will have blue-grey wings and back with a finely barred reddish chest; if female, grey-brown wings and back with a finely barred grey chest. The females are considerably bigger than the males with a wing length of around 240 millimetres, the males have a wing length of around 200 millimetres. However, the difference in weight between males and females is even more striking with males at around 150 grams, and the females at around 270 grams - the males being only just more than half the weight of the females.

This weight difference is reflected in the size of prey that each of the sexes are able to catch and subdue. The favoured hunting technique of the Sparrowhawk is to fly low over hedges and bushes and to basically crash into its prey, both stunning it and at the same time grasping the prey with a pair of long sharp claws on which the prey becomes impaled. The males frequently take bluetits and sparrows, whereas the females take blackbirds and thrushes, and they are even capable of taking pigeons. Taking pigeons makes them unpopular with the racing pigeon fraternity, but there are also records of them taking Grey Partridges which makes them equally unpopular with gamekeepers.

Sparrowhawks are not particularly long lived. They are preyed by larger birds such as Buzzards and Peregrine Falcons, and not least the aforementioned gamekeepers. Our juvenile Sparrowhawk has only a 34% chance of surviving its first year, so two out of three don't make it, and the average lifespan of adults is only about four years though ringed examples have lived up to twenty years.

The Sparrowhawk is called a musket by falconers after the Latin word *musca* meaning a fly. The Latin name for the Sparrowhawk is *Accipiter nisus*, *Accipiter* being Latin for 'hawk' and *nisus* comes from Greek mythology. Nisus, the king of Megara, was turned into a sparrowhawk after his daughter cut off a purple lock of his hair to present to her lover, and Nisus's enemy, Minos. They were a curious lot those ancient greeks!

**Wanedale Pest Control
& Drainage Solutions**

ALL PESTS UNDERTAKEN

Free quote
Fully Qualified & Insured
Domestic & Commercial
Bird Proofing & Cleaning
Affordable Prices
Drain Cleaning & Jetting
CCTV Drain Surveys

01424 256042

07816 220228

wanedalepestcontrol@yahoo.co.uk

www.wanedalepestcontrol.co.uk



BOOK A DEMO

DISCOVER HOW TO USE A THERMOMIX IN YOUR KITCHEN TO CREATE EVERYTHING YOU LOVE.



FANCY IT UP - VICKY MAY

07761 892304
EMAIL: TORMAY@HOTMAIL.CO.UK

INSTAGRAM: FANCYITUP_VICKYMAY
FACEBOOK: FANCY IT UP - VICKY MAY



**YEW TREE
STONE
MEMORIAL
MASON'S**

UNIT 6, QUARRY FARM, BODIAM, EAST SUSSEX, TN32 5RA

**Specialist Memorial Masons
serving Kent & Sussex**

- New memorials
- Renovations
- Cleaning
- Additional inscriptions
- BRAMM listed
- All memorial fixers are City & Guilds qualified
- 20 year stability guarantee on all new memorials

Tel: **01580 831855**
E-Mail: **enquiries@yewtreestone.com**
Web: **www.yewtreestone.com**



st michael's
hospice

Celebrating life.

Your Hospice.
Your Care.

Find out more at
stmichaels-hospice.com/services
Registered charity no. 288462

January 2026 - The 'No' Year Resolution

By Kerry Williams: Communications Officer - Conservation, Sussex Wildlife Trust

Happy New Year! However you choose to celebrate, I hope your festive season was full of peace, joy, and mega loads of cheese. I always have a new year's resolution and try to make them positive. Apologise less. Dance more. Wear the shoes. Before you stop reading for fear of me going full 'live, laugh, love' don't worry, I'm heading somewhere.

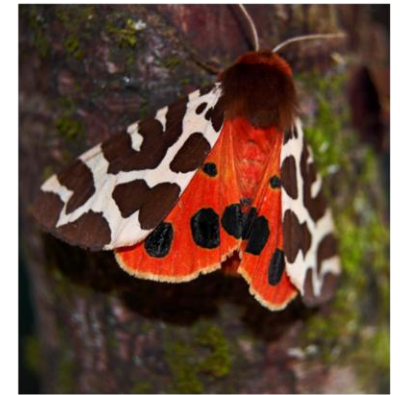
2026 is going to be the year of boundaries. As well-meaning humans, and especially in the UK, we can be a little too agreeable, put up with stuff, get on with it. But as nature illustrates, it doesn't have to be this way.

There are not many better boundary-setting role models than those species who ward off others as standard. Camouflage antithesis, these creatures make themselves obvious to warn incomers that they're not to be messed with. It's called aposematism, a defence mechanism utilised by certain species across the board; invertebrates, plants, mammals, birds, fish and fungi. Told you I had a point.

There are a few different types of aposematism.

Aposematic colouration: deliberately bright colours to visually warn of a toxic taste to others (whether this is true or not). Think ladybirds, wasps and Cinnabar moth caterpillars, who are bright yellow to mirror the toxic traits taken on by their favourite food plant - Ragwort. Then there are Cuttlefish, whose colour-changing skills give them the option of disguise or bold vibrant attack.

Olfactory aposematism: repelling predators by producing a smell or foul-smelling substance. This dirty card is played by several species of shield bug, sometimes harshly but accurately known as stink bugs. Many plants are notable for this feature, including the strong-smelling Wild Garlic.



Garden Tiger Moth c. Alan Price, SWT

Auditory aposematism: sound as a deterrent. Many species make alarm calls to expose a nearby predator, like a Robin tick-ticking at the sight of a cat. But auditory aposematism is making a sound to directly warn of one's own danger or distaste to others. A famous example is the Rattlesnake, which clatters its tail to give the heads up - "it's not worth it mate". Closer to home, the Garden Tiger moth rubs its wings together to make a rasping noise to the same effect.

Symbolic or tenuous, there's no doubt these creatures have mastered the art of communicating their boundaries. In nature there's no awkwardness, no deeper meaning, no overthink- imagine! So, in nature's honour, this year I'll be saying a lot more 'no'. Hopefully with no need for any olfactory assistance.

Sussex Wildlife Trust is a conservation charity for everyone who cares about nature in Sussex. Founded in 1961, we have worked with local people for over half a century to make Sussex richer in wildlife.

Hastings & Rother Legal Services Ltd

Your local Estate Planning Practitioner & Funeral Planning Specialist
Regulated by the Society of Will Writers & Estate Planners

Wills, Lasting Power of Attorney, Trusts
Fixed Fee Estate Administration (Probate)
Pre-Paid Funeral Plans*
Lifetime Mortgage/Equity Release

All in the comfort of your own home

PEACE OF MIND.....that your wishes will be carried out
PROTECTION*.....for your family against rising funeral cost
AFFORDABILITY*.....through a range of flexible payment options
FLEXIBILITY*.....that you can allocate your plan to someone else if necessary



Peter R Wallace FAIA, MCMI

“Glenthorne” Warren Road Fairlight TN35 4AN
Tel: 01424 813346
Mob: 07484 116384
Email: handrlegalservices@gmail.com



**COASTGUARD LANE,
FAIRLIGHT, TN35 4AB
01424 813 373**

We are a community Café serving simply the best coffee, tea, cakes and scones and home-made food using local suppliers and local staff.
With great views over the channel and a beautiful ambience

Visit our website at: www.coastguardcafe.co.uk



www.STLocks.co.uk

STLocks1066@gmail.com

S.T Locksmiths

Our local experienced locksmiths are fully insured and trained in non-destructive entry techniques to get you back indoors safely.

- No call-out fee
- No hidden charges
- No VAT
- Free quotes given
- Local Family Run Business
- British Standard approved locks

Open 6:00am - 10:00pm

07440323523

ARCHITECTURAL AND PLANNING SERVICES

PLANNING AND BUILDING CONTROL DRAWINGS

- Extensions
- Alterations
- New Builds
- Loft Conversions
- Renovations
- Change of Use
- Technical Construction Drawings
- Party Wall Surveying

TOWN PLANNING

- Pre-Application Advice
- Permitted Development Advice
- Submission of Planning Applications
- Supporting Statements

INTERIOR DESIGN

- Space Audits
- Lighting Design
- Full Space Design
- Colour Design

RUBICON

Chartered Building Consultancy



Contact us for a quote or free consultation:

M: 07969 729569 | o: 01303 237704

enquiries@rubiconbc.com | www.rubiconbc.com

Tara Begbie

MCFHP
MAFHP

Registered Member
of the British
Association of Foot
Health Professionals



Home Visits

For preventative and
routine footcare including
ingrowing toenails,
verrucae, callus & corns

Tel: 07984 451005

Carpets & Soft Furnishings Expertly Cleaned

A local, quality service is guaranteed. We
use the very latest equipment and
cleaning methods for the best
possible results.

FREE emergency stain removal is
available to all **Pett** residents!
Just phone **(01424) 871444**

Mike will be happy to take your call

Conquest

Cleaning Services Limited
"Specialist cleaning throughout Kent & Sussex"

Innovation Centre, Highfield Drive, St. Leonards-
on-Sea, TN38 9UH

EMAIL: info@conquestcleaning.uk

Website: www.conquestcleaning.org

Members of the National Carpet Cleaners Association,
Which? rusted Trader



farnsy@hotmail.co.uk
07967 794749
01424 815241

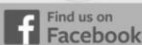


Fully Qualified and Insured
One-to-One Grooming

SERVICES

FIND US

• Bath & Dashed	Darenth
• Hand Strip	Fyrsway
• Pet Trim	Fairlight
• Breed Standard	TN35 4BG
• Nail Clip	07715 587489



Find us on
Facebook



GEM AUTO

SPECIALISED SERVICES LTD

VOLKSWAGEN GROUP VEHICLE SPECIALISTS

- VEHICLE SERVICING
- VEHICLE MECHANICAL REPAIRS
- VEHICLE DIAGNOSTICS
- ELECTRICAL REPAIRS
- TYRES & WHEEL BALANCING
- TIMING BELT / WATER PUMP REPLACEMENT
- MOT ARRANGEMENT
- EXHAUSTS
- AIR CONDITIONING SERVICE
- BRAKES
- TOW BAR & ACCESSORY SPECIALIST
- CLUTCH REPAIRS

ALL MANUFACTURERS CATERED FOR

TEL: 01797 224589 MOB: 07842 110871

WINCHELSEA - RYE

WWW.GEM-SERVICES.LTD



Lyn provides friendly, expert,
and professional advice in your
own home for:

- Wills
- Lasting Powers of Attorney
- Probate assistance

01424 815 203 / 07802 280 828

lyn@lyncookeassociates.com

Lyn Cooke Associates, Hedgerows,
72 Lower Waites Lane, Fairlight,
East Sussex, TN35 4DD



On behalf of APS Legal & Associates Ltd
Head office: Worksp Turbine Innovation Centre,
Shireoaks Triangle Business Park, Coach Close, Worksp,
Nottinghamshire, S81 9AP

APS Legal & Associates is a member of the Institute of
Professional Willwriters

APS Legal & Associates complies with the Trading Standards
Institute Approved IPW Code of Practice
APS Legal & Associates Limited is registered in England and
Wales under company number 05629536
Estate Planning and the provision of Wills are not regulated by
the Financial Conduct Authority



Adem Alpay

NEW CLIENTS
ENJOY A 20%
INTRODUCTORY
DISCOUNT
- AND RECEIVE THE SAME
WHEN YOU REFER YOUR
FIRST FRIEND

HAIRSTYLIST & COLOURIST

HASTINGS, ST LEONARDS, RYE & BEYOND

LUXURY HAIRDRESSING, AT YOUR DOORSTEP

With 30+ years of experience, Adem brings high-end salon expertise straight to your home — or his private studio in Fairlight, if you prefer.

From his roots in the family salon to Art Director at the UK's first day-spa salon, Cobella Akqa, he's built a loyal following with his personalised cuts, colour, and styling.

His work has spanned hair shows, TV, and editorial shoots—but his passion lies in creating confidence-boosting hair for real people.

Now based between London and East Sussex, Adem is welcoming new clients in Hastings, St Leonards, Rye and surrounding areas.

Ready for salon-quality hair at home?

**Book your appointment today
and let Adem bring the style to you**

07970 978 890 | ADEM.ALPAY@ME.COM
ADEMALPAY.COM*

Because every client is unique, pricing is tailored to suit your individual needs. Bespoke quotes can be discussed during your initial consultation.

*Please note: the price list shown online reflects London rates

EVENTS-TRAVEL

Tel: 01424 402040
Mob: 07850 237664

Local, Long Distance & Airports
1 to 8 Passengers
www.events-travel.co.uk



Funnell & Perring SOLICITORS

192-193 Queens Road Hastings
East Sussex TN34 1RG

**EXPERIENCED ADVICE IN A
FRIENDLY CARING ATMOSPHERE**

We specialise in:

Wills and Trusts
Conveyancing
Probate
Family Matters
Child Care Work
Court Work

Please contact us on
01424 426287/437081
for more information

email: law@funnellperring.co.uk

FLEAS, WASPS, BEES,
RATS, MICE,
MOLES, PIGEONS

ROTHER PEST CONTROL

R.S.H. CERTIFICATED
&
General Property Maintenance
Fencing – Brickwork
Roofing

Mr. A.D. Benn

Tel: **01797 226778**
Mobile: **07739 174552**


TV Aerial & Satellite Services

Your Local Satellite Installer and TV
Aerial Engineer

Telly Addicts install & setup satellite
equipment in your home, from Sky TV to
Freeview. Single and multi-room satellite
installations.

We are based in Hastings and cover East
Sussex from Eastbourne to Ashford.

Contact: Bruce Rigglesford

07973 263652

info@tellyaddicts.co.uk
www.tellyaddicts.co.uk



ROYAL OAK FREE HOUSE PETT

January Live Music

Sundays @ 4:30pm

11th: **The Martin Blackman Band**

18th: **Pass The Cat**

25th: **The Mark Wright Trio**

CHARITY QUIZ NIGHT

Wednesday 7th and 21st

In aid of Hastings and Rother Samaritans

8pm start - Teams up to 6 -

£2.50 per person

Dates for your Diary:

Valentines: Saturday 14th February

Mother's Day: Sunday 15th March

Book now to avoid disappointment!



Mondays 4 - 8*pm

*Subject to stock availability

**REAL ALES ~ FINE WINES ~ LOCALLY SOURCED FOOD
LIVE MUSIC ~ LOG FIRES ~ BEER GARDEN ~ DOGS WELCOME**



www.royaloakpett.com ~ 01424 812515 ~ @royaloakpett

Charles & Co. ESTATE AGENTS

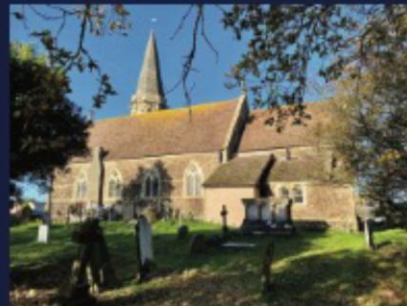
* FREE VALUATIONS by *Charles*

* SELLING IN PETT & PETT LEVEL
FOR 24 YEARS

* PROFESSIONAL, PROACTIVE &
TRUSTWORTHY

Charles & Co.

YOUR LOCAL VILLAGE SPECIALIST



Tel: 01424 259675

Email: charles@charlesco.uk - Web: www.charlesco.uk

Pett Village Hall Activities

Monday

Doctor Surgery	9.00am-1.00pm
Bluebells Playgroup	9.30-11.00am
Table Tennis	4.00-5.30pm
Yoga	6.00-7.30pm

Tuesday

Doctor Surgery	9.00am-5.30pm
Pilates	8.30-9.30am
The Hill Surgery Prescription Service	12-12.45pm
Pole Dancing	7.15-8.45pm

Wednesday

Pett Painters	2.00-4.00pm
Dance Fitness	6.00-7.30pm

Thursday

Doctor Surgery	9am-5.30pm
The Hill Surgery Prescription Service	12-12.45pm
Art	12-3.00pm
Short Mat Bowls (In season)	3.15-5.15pm
Fitness Pilates	6.30-7.15pm
Lindy Hop	7.30-10pm

Friday

Badminton	10.00am-12pm
-----------	--------------

For details of who runs each class and how to join see our website - www.pettvillagehall.co.uk

For bookings of the hall please contact Clare at clare@pettvillagehall@gmail.com Telephone 07718 518053. Doctor's appointments can only be made by contacting The Hill Surgery direct.

500 CLUB

Draw Date: 3rd December 2025

1st: Stuart Hamilton
2nd: Jan Tomalin
3rd: Sally Watson

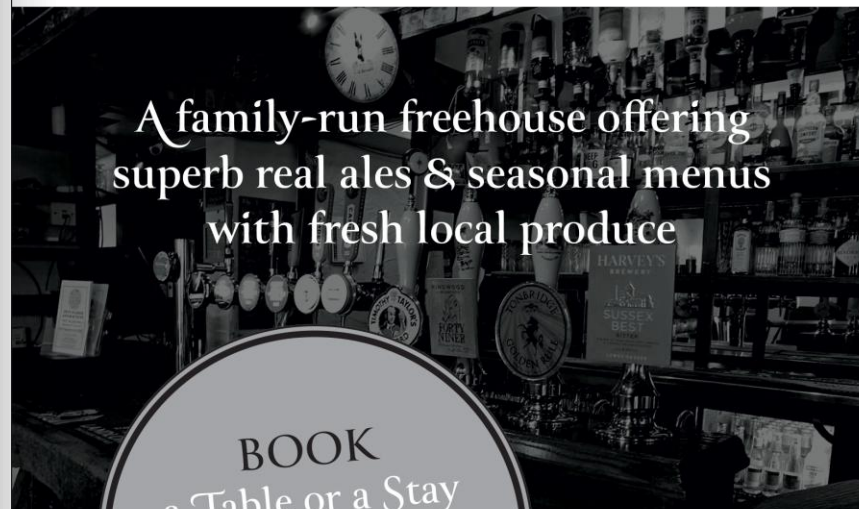
**PETT
VILLAGE
HALL**

Pett Village Hall is a Registered Charity in England and Wales No 1005693



The Two Sawyers

Pub • Restaurant • Bed & Breakfast



A family-run freehouse offering
superb real ales & seasonal menus
with fresh local produce




BOOK
a Table or a Stay
at The Two Sawyers
by phone or via the
website.




Pett Road, Pett, Hastings, TN35 4HB
01424 812255 // BOOK ONLINE
twosawyers.co.uk

@TwoSawyers

@twosawyerspett

COUNCIL RESPONSIBILITIES & CONTACTS	
Recreation ground and play area (except the bowling green, sports pavilions, tennis courts and cricket pitch which are leased to the Pett Sports Association)	PPC
Defibrillator and phone kiosk opposite the Royal Oak	PPC
War memorial at Pett Church	PPC
Several roadside benches, noticeboards, and village signs	PPC
Website (PettNet); Pett & Pett Level News Magazine	PPC
Roads (inc Road Markings, Road Signs, Drains, Potholes, fallen trees)	ESCC
Verges & Footpaths	ESCC
Planning (applications, decisions, appeals, etc)	RDC
Refuse & Recycling	RDC
Fly-Tipping & Pollution	RDC
Dog & Pest Control	RDC
Beach Bye-Laws	RDC
Sea Wall at Pett Level	EA
PETT PARISH COUNCIL (PPC)	
In addition to the above responsibilities PPC can also provide a parish wide view on planning applications. PPC may be able to help you find out who to contact if you have a problem, can help escalate if your problem is not being dealt with, and can assist in lobbying the relevant authorities in the event of continued poor service.	
	
COUNCILLORS	
Alan Crouch (Vice-Chair)	01424 813145 cllr.alan.crouch@pettnet.org.uk
Andrew Dunlop	01424 813368 cllr.andrew.dunlop@pettnet.org.uk
Al Evans	cllr.al.evans@pettnet.org.uk
Richard Homewood	cllr.richard.homewood@pettnet.org.uk
George Locke	cllr.george.locke@pettnet.org.uk
Andrew Norcott	07802 729412 cllr.andy.norcott@pettnet.org.uk
David Penfold (Chair)	01424 813003 cllr.david.penfold@pettnet.org.uk
PARISH CLERK	
Mary Philo	01797 270790 clerk@pettnet.org.uk
Island Cottage, Swan Street, Wittersham, Kent, TN30 7PH	
TREE WARDEN	
Marcus Foster	07812 024070 mail@marcus-foster.com
FLOOD WARDEN	
Alan Crouch	01424 813145 cllr.alan.crouch@pettnet.org.uk
EAST SUSSEX COUNCIL (ESCC)	
www.eastsussexhighways.com/report-a-problem 0345 6080190; www.eastsussex.gov.uk	
Councillor Keith Glazier 07957 377844 cllr.keith.glazier@eastsussex.gov.uk	
	
THE ENVIRONMENT AGENCY (EA)	
03708 506 506	
	

VILLAGE CONTACTS			
ARC	Paul Petley	07818 014610	archiveresourcecentre@outlook.com
<i>Badminton</i>	Wendy Petley	07813 633013	ttbadpett@outlook.com
<i>Bowls Club</i>	Mary Saint	813047	mary@saintfamily.net
<i>British Legion</i>	Brian Green	812450	toffee35@gotadsl.co.uk
<i>Cricket Club</i>	Andrew Dunlop	813368	
<i>Dance Fitness</i>	Laura Mitchell	07527 105352	lauramitchell6@sky.com
<i>Flower Show</i>	Philippa Strickland	814384	pstrickl@icloud.com
<i>Gardening Club</i>	Bob Harris	07947 184176	bob.june@btopenworld.com
<i>Guardians of Pett Churchyard</i>	Mike Wilkins	07710 080148	
<i>Churches in Pett and Pett Level</i>	John Case	07536 998530	churchwardenforpett@gmail.com
<i>- Friends</i>	Heather Godwin	07977 100296	
<i>Pett Level Preservation Trust</i>	Theresa Nouch	814370	theresanouch@aol.com
<i>Pilates</i>	Belinda Weber		belinda.weber9@gmail.com
<i>Fitness Pilates</i>	Susan Trimmer		susantrimmerfitness@gmail.com
<i>Pole Dancing</i>	Jane Baldwin	07403 256148	jane@mrzen.co.uk
<i>PVH Committee</i>			pettvillagehall.co.uk
<i>Seaside Stitchers</i>	Donna Gilbert	812185	donnagilbert1@sky.com
<i>Short Mat Bowls</i>	Brenda Kirkham	07444 008034	beekirkham@btinternet.com
<i>Stoolball</i>	Janet Fuller	01303 873227	
<i>Table Tennis</i>	Alan Kenworthy	07835 112566	ttbadpett@outlook.com
<i>Tennis Club</i>	Stuart Ware	07971 662068	petttennisclub@gmail.com
<i>Activate Youth Club</i>	Wendy Hatch	812297	familyhatch1@gmail.com
<i>Village Voices</i>	Wendy Hatch	812297	familyhatch1@gmail.com
<i>WI</i>	WI Secretary		Pettwi1917@gmail.com
<i>Yoga Class</i>	Robin Hutt	813182	robinhutt@btinternet.com
ROOMS FOR HIRE			
<i>Methodist Chapel</i>	Wendy Hatch	812297	familyhatch1@gmail.com
<i>Sports Pavilion</i>	Stuart Ware	07971 662068	sjw@meadowshed.co.uk
<i>Village Hall</i>	Clare Walker	07718 518053	clare.pettvillagehall@gmail.com
<i>New Beach Club</i>		812080	info@thenewbeachclub.co.uk

MEDICAL, CRISIS SUPPORT & ANIMAL WELFARE			
Hospitals & GP Surgeries			
Conquest & Eastbourne Hospitals	0300 131 4500		
Harold Road Surgery	01424 720878		
Hastings Old Town Surgery	01424 452800		
Other Numbers:			
Samaritans	116 123		
Citizens Advice	03444 111 444		
RSPCA Emergency Services	0300 1234 999		
PUBLIC ACCESS DEFIBRILLATORS			
Pett Level - Pett Level Independent Rescue Boat Boathouse			
Pett Level - The New Beach Club			
Pett - Telephone box opposite The Royal Oak on Elms Lane			
Pett - Village Hall			
			
EMERGENCY CONTACTS FOR UTILITIES			
GAS LEAKS	National Gas Emergency Service	0800 111 999	
POWER CUT	UK Power Networks	105	
WATER LEAK	Southern Water emergency service	0800 820 999	

BUS TIMETABLES: 347 and 101

Hastings • Ore • Guestling • Pett				347			
MONDAYS TO FRIDAYS except Bank Holidays				SATURDAYS			
		Hols	Sch				
Hastings Rail Station ⇄ Stop E		1330	1510	1510		1330	1510
Queens Road opp. Priory Meadow Stop N	0945 1150 1335	1515	1515	1640 1740	0945 1150 1335	1515	1640 1740
Milward Road Manor Road	0950 1155 1340	1520	1520	1645 1745	0950 1155 1340	1520	1645 1745
Ore Post Office	0955 1200 1345	1525	1525	1750	1345	1750	
Ore The King's Head	0957 1202 1347	1527	1527	1752	1347	1752	
Guestling The White Hart	1001 1206 1351	1531	1531	1756	1351	1756	
Guestling School	▼	▼	▼	1534	▼	▼	▼
Pett Church	1006 1211 1356	1536	1542	1801	1356	1801	
Pett Chick Hill	1009 1214 1359	1539	1545	1804	1359	1804	

**Timetables are subject to change
Check before you travel**

Visit: www.stagecoachbus.com or download the Stagecoach app to view live bus times or call them on 0345 241 8000

Pett • Guestling • Ore • Hastings

MONDAYS TO FRIDAYS except Bank Holidays										SATURDAYS				
	Sch	Hols			Hols	Sch								
Pett Chick Hill	0819	0826	1012	1217	1402	1542	1547			0826	1402			
Pett Church	0822	0829	1015	1220	1405	1545	1550			0829	1405			
Guestling Green School	0829	▼	▼	▼	▼	▼	▼			▼	▼			
Guestling The White Hart	0834	0834	1020	1225	1410	1550	1555			0834	1410			
Ore The King's Head	0838	0838	1024	1229	1414	1554	1559			0838	1414			
Ore Post Office	0840	0840	1026	1231	1416	1556				0840	1416			
Milward Road Manor Road	0845	0845	1030	1235	1420	1600				0845	0952	1157	1420	1522
Hastings Queens Road	▼	▼	1035	1240	1425	1605				▼	0957	1202	1425	1527
Hastings Harold Place	0849	0849								0849				
Hastings Rail Station ⇄	0851	0851								0851				
Fairlight Glen											1603			
Fairlight Cove Hotel											1609			
Pett Level											1615			

There are no Sunday or Bank Holiday buses on route 347.

Hols - This bus journey runs on Mondays to Fridays during school holidays only.
Sch - This bus journey runs on schooldays only.

Rye | Fairlight | Hastings | Conquest Hospital

Mondays to Saturdays except public holidays										Sundays and public holidays				
	MF	Sch	SSH							NR	NR	NR	NR	
Rye Rail Station Stand A	0654	0748	0756	0856	Then	56		1756	1856	2154	1034	1234	1434	1634
Winchelsea Beach Caravan Park	0704	0759	0807	0907	every	07		1807	1907	2205	1045	1245	1445	1645
Pett Level Canal Bank	0708	0803	0811	0911	hour	11		1811	1911	2209	1049	1249	1449	1649
Fairlight Cove Commanders Walk	0714	0809	0817	0917	at	17	until	1817	1917	2215	1055	1255	1455	1655
Fairlight Coastguard Lane	0720	0815	0823	0923	these	23		1823	1923	2221	1101	1301	1501	1701
Ore Co Op	0725	GG	0828	0928	times	28		1828	1928	2226	1106	1306	1506	1706
Hastings Railway Station arrive	0740	0852	0843	0943		43		1843	1943	2241	1123	1323	1523	1723
Bohemia Road Fire Station	-	-	-	-		-		-	-	1947	1128	1328	1528	1728
Silverhill Filling Station*	-	-	-	-		-		-	-	1951	-	-	-	-
Harrow Lane Ashdown House	-	-	-	-		-		-	-	-	1132	1332	1532	1732
Conquest Hospital	-	-	-	-		-		-	-	-	1137	1337	1537	1737
	-	-	-	-		-		-	-	-	1142	1342	1542	1742

Notes MF Journey runs Mondays to Fridays only
Sch Journey runs schooldays only
SSH Journey runs on Saturdays and school holidays only
* Buses terminating at Silverhill stop in Chatham Road
GG Serves Guestling Green School at 0830 and Ore Post Office at 0838.

Mondays to Saturdays except public holidays										Sundays and public holidays					
										NR	NR	NR	NR		
Conquest Hospital										2045	1045	1245	1445	1645	
Harrow Lane Ashdown House										2051	1049	1249	1449	1649	
Silverhill London Road										2057	0856	1056	1256	1456	1656
Bohemia Road Fire Station										2101	0900	1100	1300	1500	1700
Hastings Railway Stn stop F					Then	49		1749	1855	2106	0910	1110	1310	1510	1710
Ore Co Op	0711	0802	0902	1004	every	04		1804	1905	2116	0923	1123	1323	1523	1723
Fairlight Coastguard Lane	0715	0806	0906	1008	hour	08		1808	1909	2120	0927	1127	1327	1527	1727
Fairlight Cove Commanders Walk	0721	0812	0912	1014	at	14	until	1814	1915	2126	0933	1133	1333	1533	1733
Pett Level Canal Bank	0727	0818	0918	1020	these	20		1820	1921	2132	0939	1139	1339	1539	1739
Winchelsea Beach Caravan Park	0731	0822	0922	1024	times	24		1824	1925	2136	0945	1145	1345	1545	1745
Rye Rail Station	0743	0834	0934	1036		36		1836	1937	2148	0957	1157	1357	1557	1757

For other buses between Rye and Hastings, see timetable for route 100.
For other buses between Hastings and Conquest Hospital, see timetables for routes 28, 29 and 100.

NR On Sundays, buses continue to or from New Romney - see route 100 timetable for full details

**Timetables are subject to change
Check before you travel**

Visit: www.stagecoachbus.com or download the Stagecoach app to view live bus times or call them on 0345 241 8000

Benefice of Winchelsea, Icklesham & Pett



CHURCH SERVICES - JANUARY

SUNDAY 4 JANUARY

St Nicholas, Pett Level	8.30am	BCP Communion
St Thomas, Winchelsea	11.00am	Parish Eucharist

SUNDAY 11 JANUARY

All Saints & St Nicolas, Icklesham	9.30am	Parish Eucharist
St Thomas, Winchelsea	11.00am	Parish Eucharist

SUNDAY 18 JANUARY

St Mary & St Peter, Pett	9.30am	Parish Eucharist
St Thomas, Winchelsea	11.00am	Parish Eucharist

SUNDAY 25 JANUARY

All Saints & St Nicolas, Icklesham	9.30am	Parish Eucharist
St Thomas, Winchelsea	11.00am	Parish Eucharist

WEDNESDAY 28 JANUARY

St Thomas, Winchelsea	7.30pm	Institution and Induction of the Revd Nathanael Hayler
-----------------------	--------	---

www.achurchnearyou.com

For all enquiries relating to St Mary & St Peter church in Pett and St Nicholas church in Pett Level, please contact John Case, Churchwarden either by email - churchwardenforpett@gmail.com or by phone on 07536998530



Pett & Pett Level News January 2026